



MOVE
YOUR
DREAMS
FORWARD.

START TODAY.

Discover education that fits your
life and accelerates your career.

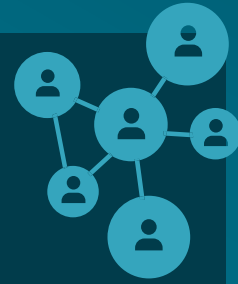
WALDEN
UNIVERSITY
EDUCATION FOR GOOD™

GET TO KNOW WALDEN

Walden University, an accredited institution, empowers a diverse community of working professionals to transform themselves as scholar-practitioners so that they can effect positive social change.

MORE THAN
144,000
GRADUATES

make up the Walden alumni network.

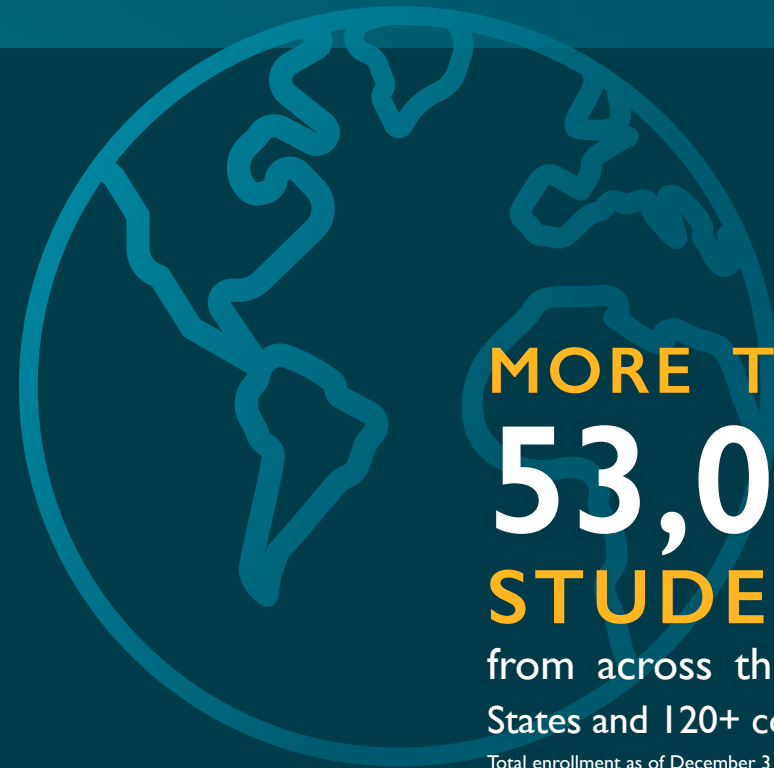


50 YEARS

of providing working
professionals with access
to higher education



PROUD
YELLOW RIBBON
SCHOOL



MORE THAN
53,000
STUDENTS

from across the United
States and 120+ countries.

Total enrollment as of December 31, 2018.



WOMEN
make up about
THREE-QUARTERS
of Walden's student base.

Source: Walden University Office of
Institutional Research and Assessment,
based on fall 2019 enrollment and the
2019 Student Satisfaction survey.

MINORITIES
make up more than
HALF of our
student body.

FACULTY
INCLUDES
300+
HONOREES

for excellence in teaching and mentorship.

Source: Walden University Office of Institutional Research and
Assessment, based on information provided by faculty members
via Faculty Insight Tool (FIT) as of February 2020.



Walden has a
66%

AVERAGE RATE OF
VOLUNTEERISM



among alumni compared with the national average
among college graduates of 39%, according to the
Bureau of Labor Statistics (2016).

Source: 2018 Walden Alumni Satisfaction Survey; % calculated on total
number of respondents to Walden's 2018 survey. Comparison data from
the Bureau of Labor Statistics was reported last on February 25, 2016,
using data gathered between September 2014 and September 2015.
www.bls.gov/news.release/pdf/volun.pdf.



CERTIFIED
B CORPORATION

**EMPLOYER
PARTNERSHIPS**

We have a proven track record in
collaborating with organizations
around the world, including businesses,
health systems, and school districts.



EXPLORE

our **80+ degree programs**
and **300+ concentrations** to find
the right program for you.



“
WALDEN HAS
PROVIDED ME THE
LIFE I WANTED—

to be able to pursue
my education and still be
a father and a husband.
I am forever grateful.

—
DERRICK CARTER

BS in Business Administration Graduate
MS in Leadership Graduate



DOCTOR OF BUSINESS ADMINISTRATION (DBA)

ACBSP accredited

Specializations:

Accounting
Energy Management
Entrepreneurship
Finance
Global Supply Chain Management
Healthcare Management
Homeland Security
Human Resource Management
Information Systems Management
International Business
Leadership
Marketing
Project Management
Self-Designed
Social Impact Management
Technology Entrepreneurship

PHD IN MANAGEMENT

ACBSP accredited

Specializations:

Human Resource Management
Information Systems Management
Leadership and Organizational Strategy
Organizational Design and Innovation
Self-Designed
21st Century Finance

Dissertation completion program:

Available for PhD in Management candidates
who have completed all program coursework

MS IN ACCOUNTING

ACBSP accredited

Specializations:

Accounting for the Professional
Accounting With CPA Emphasis
Self-Designed

MS IN FINANCE

Specializations:

Finance With Certified Financial
Planner (CFP)* Certification Emphasis
Finance With Chartered Financial Analyst
(CFA)/Investment Emphasis
Finance for the Professional (Self-Designed)

MASTER OF BUSINESS ADMINISTRATION (MBA)

ACBSP accredited

General Program

Specializations:

Accounting
Corporate Finance
Entrepreneurship and Small Business
Healthcare Management
(*Course-Based and Competency-Based*)
Human Resource Management
Leadership
Marketing
Project Management
(*Course-Based and Competency-Based*)
Self-Designed

MS IN HUMAN RESOURCE MANAGEMENT

Walden's BS in Business Administration, Master of Business Administration (MBA), Doctor of Business Administration (DBA), and PhD in Management programs are accredited by the Accreditation Council for Business Schools and Programs (ACBSP). The MS in Accounting and BS in Accounting programs are also accredited by the ACBSP and have earned the organization's Specialized Accounting Accreditation.

*CERTIFIED FINANCIAL PLANNER™ and CFP® are certification marks owned by Certified Financial Planner Board of Standards, Inc. ("CFP Board"). Walden University's MS in Finance program is not a CFP Board-Registered Program and is not in any way sponsored or endorsed by, or otherwise affiliated with, CFP Board.

MS IN LEADERSHIP

General Program

Specializations:

Executive Leadership

Integrated Communication Skills
for Leaders

Leader Development

Self-Designed

MS IN MANAGEMENT

General Program

Specializations:

Healthcare Management

Human Resource Management

Leadership

Marketing

Project Management

Strategy

MS IN MARKETING

MS IN PROJECT
MANAGEMENT

PMI® GAC accredited

BS IN ACCOUNTING

ACBSP accredited

General Program

Concentration:

Public Accountancy

BS IN BUSINESS
ADMINISTRATION

ACBSP accredited

General Program

(Course-Based and Competency-Based)

Concentrations:

Accounting

Data Science

Finance

Healthcare Management

Human Resource Management

Information Systems

Management

Marketing

Small Business Management

CERTIFICATE
PROGRAMS

Post-Doctoral Bridge to
Business Administration Certificate

Post-Doctoral Bridge to
Management Certificate

Graduate Certificate in
Advanced Project Management

Graduate Certificate in
Applied Project Management
(Course-Based and Competency-Based)

Graduate Certificate in Auditing

Graduate Certificate in Brand and
Product Marketing

Graduate Certificate in
Business Management

Graduate Certificate in Digital Marketing

Graduate Certificate in Human Resource
Management

Graduate Certificate in Leadership

Graduate Certificate in
Managerial Accounting

Walden University's MS in Project Management program is accredited by the Project Management Institute (PMI)® Global Accreditation Center (GAC) for Project Management Education Programs. PMI GAC is the world's leading specialized accrediting body for project management education and related degree programs, affirming that Walden's curriculum meets rigorous quality standards established by the GAC.

MS IN
COMMUNICATION

BS IN
COMMUNICATION

GRADUATE
CERTIFICATE IN
COMMUNICATION





“

EACH FACULTY MEMBER OF THE UNIVERSITY CARES

about each student accomplishing
his or her goals, no matter what
degree level.

— TOMMY WHITE

MS in Criminal Justice Leadership and
Executive Management Graduate

PHD IN CRIMINAL JUSTICE

General Program

Specializations:

Emergency Management

Global Leadership

Homeland Security Policy
and Coordination

Justice Administration

Law and Public Policy

Online Teaching in Higher Education

Public Management and Leadership

MS IN CRIMINAL JUSTICE

General Program

Specializations:

Behavioral Sciences

Cybercrimes

Emergency Management

Homeland Security Policy
and Coordination

International/Global
Criminal Justice Issues

Law and Public Policy

Public Management and Leadership
(*Course-Based and Competency-Based*)

Terrorism, Mediation, and Peace

MS IN CRIMINAL JUSTICE LEADERSHIP AND EXECUTIVE MANAGEMENT

BS IN CRIMINAL JUSTICE

Concentrations:

Advanced Topics in Criminal Justice –
Accelerate Into Master's (AIM)

Corrections and Human Services

Crime and Criminal Investigation
(*Course-Based and Competency-Based*)

Criminal Justice Management and
Administration – Accelerate Into
Master's (AIM)

Self-Designed

GRADUATE CERTIFICATE IN CRIMINAL JUSTICE

DOCTOR OF EDUCATION (EDD)

Specializations:

- Community College Leadership
- Curriculum, Instruction, and Assessment
- Early Childhood Education
- Educational Administration and Leadership (for Administrators)
- Educational Administration and Leadership (Non-Licensure)
- Educational Technology
- Higher Education and Adult Learning
- Higher Education Leadership and Management
- Higher Education (Self-Designed)
- P–20 Education (Self-Designed)
- Reading, Literacy, and Assessment
- Special Education

PHD IN EDUCATION

Specializations:

- Curriculum, Instruction, Assessment, and Evaluation
- Early Childhood Leadership and Advocacy
- Early Childhood Special Education
- Educational Policy, Leadership, and Management
- Educational Technology and Design
- Higher Education Leadership, Management, and Policy
- Higher Education Leadership and Policy (Self-Designed)
- Learning, Instruction, and Innovation
- Organizational Research, Assessment, and Evaluation
- P–20 Education (Self-Designed)
- Reading, Literacy, Assessment, and Evaluation

EDS IN CURRICULUM, INSTRUCTION, AND ASSESSMENT

EDS IN EARLY CHILDHOOD EDUCATION (NON-LICENSURE)

EDS IN EDUCATIONAL ADMINISTRATION AND LEADERSHIP (NON-LICENSURE)

EDS IN EDUCATIONAL LEADERSHIP AND ADMINISTRATION (PRINCIPAL LICENSURE PREPARATION)

EDS IN EDUCATIONAL TECHNOLOGY

EDS IN LEARNING, INSTRUCTION, AND INNOVATION

EDS IN READING, LITERACY, AND ASSESSMENT (NON-LICENSURE)

EDS IN SPECIAL EDUCATION (NON-LICENSURE)

MS IN EARLY CHILDHOOD STUDIES

Specializations:

- Administration, Management, and Leadership (Course-Based and Competency-Based)
- Teaching Diversity in Early Childhood Education (Course-Based)
- Teaching and Learning in Early Childhood Settings (Competency-Based)

MS IN EDUCATION (MSED)

(Three tracks: Traditional, Accelerated, and MSED One-Credit)

Specializations:

- Curriculum, Instruction, and Assessment (Grades K–12) (Traditional and Accelerated tracks)
- Educational Leadership and Administration (Principal Licensure Preparation)
- Educational Leadership and Administration (International Non-Licensure)
- Elementary Reading and Literacy (P–6) (Non-Licensure) (Traditional and Accelerated tracks)
- Elementary Reading and Mathematics (Traditional and Accelerated tracks)
- Integrating Technology in the Classroom (Grades K–12) (Traditional and Accelerated tracks)
- Mathematics (Grades 5–8)
- Mathematics (Grades K–6)
- Mathematics and Science (Grades K–8)
- Science (Grades K–8)
- Self-Designed
- Special Education (Non-Licensure) (Grades K–12) (Traditional and Accelerated tracks)
- STEM Education (Grades K–8)
- Teacher Leadership (Grades K–12) (Traditional and Accelerated tracks)

MS IN EDUCATION—ONE-CREDIT TRACK

Specialization:

- Elementary Education (Non-Licensure)

MS IN HIGHER EDUCATION

General Program

Specializations:

- Adult Learning
- College Teaching and Learning
- Enrollment Management and Institutional Marketing
- Global Higher Education
- Leadership for Student Success
- Online and Distance Learning

MS IN INSTRUCTIONAL DESIGN AND TECHNOLOGY

General Program

Specializations:

- Online Learning
- Training and Performance Improvement

MASTER OF ARTS IN TEACHING (MAT)

Specialization:

- Special Education (K–Age 21)

BS IN EARLY CHILDHOOD STUDIES (Competency-Based)

BS IN ELEMENTARY EDUCATION (TEACHER LICENSURE)

CERTIFICATE PROGRAMS

Walden offers 20+ graduate certificate programs in education, including:

- Graduate Certificate in Adult Learning
- Graduate Certificate in College Teaching and Learning
- Graduate Certificate in Curriculum, Instruction, and Assessment
- Graduate Certificate in Early Childhood Administration, Management, and Leadership (Course-Based and Competency-Based)
- Graduate Certificate in Elementary Reading and Literacy

“

Walden offers

**A WEALTH OF
KNOWLEDGE,
EASY ACCESS TO
INFORMATION,
AND EXCELLENT
SUPPORT**

from faculty, advisors,
and peers.

—
ISAAC ALICHE
PhD in Health Services Graduate



DOCTOR OF PUBLIC HEALTH (DRPH)

DOCTOR OF HEALTHCARE ADMINISTRATION (DHA)

PHD IN HEALTH EDUCATION AND PROMOTION

*(Three program tracks based
on educational background)*

Specializations:

Behavioral Health
Global Health
Management and Leadership
Online Teaching in Higher Education
Population Health
Research

PHD IN HEALTH SERVICES

Specializations:

Community Health
Healthcare Administration
Leadership
Public Health Policy
Self-Designed

PHD IN PUBLIC HEALTH

Specializations:

Community Health Education
Epidemiology

Dissertation completion program:

Available for PhD in Public Health candidates
who have completed all program coursework

MASTER OF HEALTHCARE ADMINISTRATION (MHA)

General Program
(Course-Based and Competency-Based)

Specializations:

Leadership and Organizational Development
Population Health
Systems and Policy
Social Entrepreneurship and Innovation

MASTER OF PUBLIC HEALTH (MPH) *CEPH accredited*

MS IN HEALTH EDUCATION AND PROMOTION

General Program

Specializations:

Emergency Preparedness
Health Policy and Advocacy
Population Health
Self-Designed
Social Entrepreneurship and Innovation



The Council on Education for Public Health (CEPH) Board of Councilors acted at its September 6, 2019, meeting to accredit the Master of Public Health Program at Walden University for a five-year term. Based on CEPH procedures and the documentation submitted, the program's initial accreditation date will be recorded as February 3, 2018. CEPH (<https://ceph.org/>) is an independent agency recognized by the U.S. Department of Education to accredit schools of public health and programs of public health. CEPH accreditation provides assurance that the program has been evaluated and met accepted public health profession standards in practice, research, and service.

BS IN HEALTH STUDIES

General Program
(Course-Based and Competency-Based)

Concentrations:

Healthcare Management
Health Promotion and Wellness
Health Psychology and Behavior

BS IN HEALTHCARE MANAGEMENT

(Course-Based and Competency-Based)

BS IN PUBLIC HEALTH

General Program
(Course-Based and Competency-Based)

Concentrations:

Healthcare Management
Health Promotion and Wellness
Health Psychology and Behavior

GRADUATE CERTIFICATE IN POPULATION HEALTH

GRADUATE CERTIFICATE IN PUBLIC HEALTH

**PUBLIC HEALTH AND
HEALTH SCIENCES**

“

Walden provides
quality education that
**APPLIES TO THE
REAL WORLD.**

I use the lessons learned
from my courses every day.

— DAUD KAMIN

MS in Software Engineering Graduate
Doctor of Information Technology (DIT) Graduate



DOCTOR OF
INFORMATION
TECHNOLOGY (DIT)

MASTER OF INFORMATION
SYSTEMS MANAGEMENT

MS IN CYBERSECURITY

MS IN DATA SCIENCE

MS IN INFORMATION
TECHNOLOGY

Specializations:

Big Data Analytics
Health Informatics
Information Assurance
and Cyber Security
Information Systems
Software Engineering

MS IN SOFTWARE
ENGINEERING

BS IN COMPUTER
INFORMATION SYSTEMS

General Program

Concentrations:

Cyber Security for Information Systems
Information Systems Management
Web and Mobile Applications Design

BS IN INFORMATION
TECHNOLOGY

ABET accredited

Concentrations:

Cyber Security and Forensics
Database Administration and
Data Center Operations
Networking and Operations
Self-Designed
Web and Mobile Applications Development

CERTIFICATE PROGRAMS

Graduate Certificate in
Advanced Cyber Security
Graduate Certificate in
Data Management
Graduate Certificate in
Fundamentals of Cyber Security
Graduate Certificate in
Information Systems



Walden University's BS in Information Technology program is accredited by the Computing Accreditation Commission of ABET (www.abet.org). ABET is the internationally recognized accreditor for college and university programs in applied science, computing, engineering, and engineering technology.

Walden University has been designated by the National Security Agency (NSA) and the Department of Homeland Security (DHS) as a National Center of Academic Excellence in Cyber Defense.

INFORMATION
TECHNOLOGY

“

Walden University’s degree programs are rigorous and taught by highly qualified faculty.

Some of the benefits include

A FLEXIBLE AND PROGRESSIVE ONLINE LEARNING FORMAT,

a collaborative learning environment, immediate real-world applications, and a variety of specialization options.

— ROMAGNIA HILL

Master of Science in Nursing (MSN) Graduate



DOCTOR OF NURSING PRACTICE (DNP)

CCNE accredited

PHD IN NURSING

Specializations:

Education

Healthcare Administration

Interdisciplinary Health

Leadership

Population Health

Bridge Option:

For students with a DNP

MASTER OF SCIENCE IN NURSING (MSN)

CCNE accredited

RN-MSN and BSN-MSN tracks available

Nurse Practitioner (direct patient care)

Specializations:

Adult-Gerontology Acute Care

Nurse Practitioner

Adult-Gerontology Primary Care

Nurse Practitioner

Family Nurse Practitioner

Psychiatric-Mental Health

Nurse Practitioner

Specialty Practice (indirect patient care)

Specializations:

Nurse Executive

(Course-Based and Competency-Based)

Nursing Education

(Course-Based and Competency-Based)

Nursing Informatics

(Course-Based and Competency-Based)

Public Health Nursing

BACHELOR OF SCIENCE IN NURSING (RN-BSN) COMPLETION PROGRAM

CCNE accredited

(Course-Based and Competency-Based)

POST-MASTER’S CERTIFICATES IN NURSING:

Nursing Education

Nursing Informatics

Nursing Leadership and Management

NURSING



The baccalaureate degree program in nursing (BSN), master’s degree program in nursing (MSN), and Doctor of Nursing Practice (DNP) program at Walden University are accredited by the Commission on Collegiate Nursing Education (www.ccneaccreditation.org).

PHD IN PSYCHOLOGY

Specializations:

- Educational Psychology
- Health Psychology
- Social Psychology
- Research in Psychology
- Teaching in Psychology
- Self-Designed

PHD IN CLINICAL PSYCHOLOGY

General Program

Specializations:

- Forensic Psychology
- Health
- Industrial and Organizational Psychology
- Teaching

PHD IN DEVELOPMENTAL PSYCHOLOGY

General Program

Specializations:

- Administration and Leadership
- Child and Adolescent Development
- Health and Human Development
- International Perspective
- Research
- Self-Designed
- Teaching

PHD IN INDUSTRIAL AND ORGANIZATIONAL PSYCHOLOGY

Specializations:

- Consulting Psychology
- Evidence-Based Coaching
- General Practice
- Human Resource Management
- International Business
- Self-Designed

PHD IN FORENSIC PSYCHOLOGY

General Program

Specializations:

- Criminal Justice Self-Designed
- Crisis Leadership Management
- Crisis Response
- Legal Issues in Forensic Psychology
- Self-Designed
- Victimology

PSYD IN BEHAVIORAL HEALTH LEADERSHIP

General Program

Specializations:

- Healthcare Management
- Health Psychology
- Industrial and Organizational Psychology
- International Practice
- Public Health
- Teaching

MS IN PSYCHOLOGY

Specializations:

- Applied Behavior Analysis (ABA)
- Applied Psychology
- Educational Psychology
- General Psychology
(Course-Based and Competency-Based)
- Health Psychology
- Self-Designed
- Social Psychology

MS IN DEVELOPMENTAL PSYCHOLOGY

General Program

Specializations:

- Administration and Leadership
- Adult Development and Gerontology
- Child and Adolescent Development
- Health and Human Development
- International Perspectives in Developmental Psychology
- Self-Designed

MS IN FORENSIC PSYCHOLOGY

General Program

Specializations:

- Criminal Justice – Self-Designed
- Cybercrimes
- Family Violence
- Legal Issues in Forensic Psychology
- Military

- Police Psychology
- Self-Designed
- Sex Offender Behavior
- Terrorism
- Victimology

MS IN INDUSTRIAL AND ORGANIZATIONAL PSYCHOLOGY

Specializations:

- Consulting Psychology
- Evidence-Based Coaching
- General Practice
(Course-Based and Competency-Based)
- Human Resource Management
- International Business
- Self-Designed

BS IN PSYCHOLOGY

Concentrations:

- Addiction
- Criminal Justice
- Forensic Psychology
- Human Services
- Psychology – General Concentration
- Workplace Psychology

POST-MASTER’S ONLINE TEACHING IN PSYCHOLOGY CERTIFICATE

PHD IN COUNSELOR EDUCATION AND SUPERVISION

CACREP accredited

General Program

Specializations:

- Advanced Research Methods
- Consultation
- Counseling and Social Change
- Forensic Mental Health Counseling
- Leadership and Program Evaluation
- Trauma and Crisis

MS IN CLINICAL MENTAL HEALTH COUNSELING

CACREP accredited

General Program

Specializations:

- Addiction Counseling
- Forensic Counseling
- Marriage, Couple, and Family Counseling
- Military Families and Culture
- Trauma and Crisis Counseling

MS IN SCHOOL COUNSELING

CACREP accredited

General Program

Specializations:

- Addiction Counseling
- Crisis and Trauma
- Marriage, Couple, and Family Counseling
- Military Families and Culture

MS DUAL DEGREE IN CLINICAL MENTAL HEALTH COUNSELING AND SCHOOL COUNSELING CACREP accredited

General Program

Specializations:

- Addiction Counseling
- Forensic Counseling
- Marriage, Couple, and Family Counseling
- Military Families and Culture
- Trauma and Crisis Counseling



Walden University's PhD in Counselor Education and Supervision, MS in Clinical Mental Health Counseling, and MS in School Counseling programs are accredited by the Council for Accreditation of Counseling and Related Educational Programs (CACREP), a specialized accrediting body recognized by the Council for Higher Education Accreditation (CHEA). CACREP accreditation is a requirement for licensure in many states.

“

Walden's DBA program's emphasis on advanced decision-making and leadership skills connected with my professional life as an **ENTREPRENEUR WHO FOCUSES THE MAJORITY OF MY WORK IN AUSTERE ENVIRONMENTS, DEVELOPING ECONOMIES, AND ACTIVE WAR ZONES.**

— ERIC BARTON

Master of Public Administration (MPA) Graduate
Doctor of Business Administration (DBA) Graduate



DOCTOR OF PUBLIC ADMINISTRATION (DPA)

PHD IN PUBLIC POLICY AND ADMINISTRATION

MASTER OF PUBLIC ADMINISTRATION (MPA)

General Program

Specializations:

Emergency Management

Law and Public Policy

Nonprofit Management and Leadership

Policy Analysis

Public Management and Leadership

Social Entrepreneurship and Innovation

MS IN NONPROFIT MANAGEMENT AND LEADERSHIP

General Program

Specializations:

Global Leadership

International Nongovernmental Organizations

Local Government Management for Sustainable Communities

Self-Designed

Social Entrepreneurship and Innovation

CERTIFICATE PROGRAMS

Graduate Certificate in Government Management

Graduate Certificate in Homeland Security

Graduate Certificate in Nonprofit Management

Graduate Certificate in Public Management and Leadership

Graduate Certificate in Public Policy

Graduate Certificate in Strategic Planning and Public Policy

READY TO TAKE THE NEXT STEP?

WE'RE HERE FOR YOU.

Visit [Waldenu.edu/AONL](https://waldenu.edu/AONL)

Learn more about Walden and exclusive tuition reductions available for employees or members of organizations that partner with Walden.

CONNECT WITH AN ENROLLMENT SPECIALIST

Have questions? Our knowledgeable Enrollment Specialists are available to answer any questions you may have and help walk you through the admissions process.



Call 1-855-591-7858 or fill out the form on [Waldenu.edu/AONL](https://waldenu.edu/AONL) to get started.

DOCTOR OF
SOCIAL WORK (DSW)

Specializations:

Addictions and Social Work
Clinical Expertise
Criminal Justice
Disaster, Crisis, and Intervention
Family Studies and Interventions
Medical Social Work
Policy Practice
Social Work Administration

PHD IN
HUMAN AND
SOCIAL SERVICES

General Program

Specializations:

Advanced Research
Community and Social Services
Community Intervention and Leadership
Conflict Management and Negotiation
Criminal Justice
Disaster, Crisis, and Intervention
Family Studies and Interventions
Gerontology
Global Social Services
Higher Education
Human Services
Nonprofit Administration
Mental Health Facilitation
Military Families and Culture
Social Policy Analysis and Planning

PHD IN SOCIAL WORK

Specializations:

Addictions and Social Work
Clinical Expertise
Criminal Justice
Disaster, Crisis, and Intervention
Family Studies and Interventions
Medical Social Work
Policy Practice
Social Work Administration

MASTER OF SOCIAL WORK
(MSW)

CSWE accredited

Concentrations:

Advanced Clinical Practice
Military Social Work
Social Work in Healthcare
Social Work With Children and Families

MS IN HUMAN AND
SOCIAL SERVICES

General Program

Specializations:

Community and Social Services
Community Intervention and Leadership
Conflict Management and Negotiation
Criminal Justice
Disaster, Crisis, and Intervention
Family Studies and Interventions
Gerontology
Global Social Services
Human Services Nonprofit Administration
Mental Health Facilitation
Military Families and Culture
Social Policy Analysis and Planning

BS IN HUMAN SERVICES

Concentrations:

Addictions
Child and Adolescent Development
Courts and the Legal System
Criminal Justice
Cultural Studies
Global Social Justice and Civic Engagement
Leadership and Administration
Psychology
Self-Designed

BACHELOR OF
SOCIAL WORK (BSW)

CSWE accredited

Optional focus areas:

Addiction
Forensics and the Criminal Justice System
Crisis and Trauma
Courts and Legal System
Healthcare Settings

GRADUATE
CERTIFICATE IN CONFLICT
MANAGEMENT
AND NEGOTIATION



Walden University's Master of Social Work (MSW) and Bachelor of Social Work (BSW) programs are accredited by the Council on Social Work Education (CSWE), a specialized accrediting body recognized by the Council for Higher Education Accreditation (CHEA). CSWE's Commission on Accreditation is responsible for developing standards that define competent preparation for professional social workers and ensuring that social work programs meet these standards.



JOIN THE

53,000+
STUDENTS AT

WALDEN UNIVERSITY
EDUCATION FOR GOOD™